



# the Oasis Collection



Imagine the *Possibilities*®

## CONTENTS

- 2** The Joyce Promise
- 4** Why Choose Vinyl
- 6** Standard Sunroom Features
- 8** Optional Sunroom Features
- 10** Climatedaster® Roof
- 12** Optional Roof Features
- 14** Smartshield Glass
- 16** Screen Room
- 17** Patio Cover
- 18** Photo Gallery
- 22** Oasis® Collection At-A-Glance



## Joyce Promise

In 1955, our co-founder named his start-up company after his wife Joyce. Her support and commitment to excellence set the foundation for quality products that are crafted to enhance your home and last for generations.

Today we continue her vision through state-of-the-art-manufacturing facilities that enable us to concentrate on the details that matter. Manufacturing quality products designed to custom fit your home, to complement your style, and to enhance your living space. We challenge you to **Imagine the Possibilities®** with your Joyce Sunroom.



3 Generations Strong



Limited Lifetime  
Transferable Warranty



Building Quality Home Improvement  
Products Since 1955



99% of Waste is Recyclable



Dealer Network



*Windows*



*Sunrooms*



*Patio Doors*

ON THE COVER:  
2600SL Gable in White

Dream it. Build it. Love it.  
*Create your own Oasis*

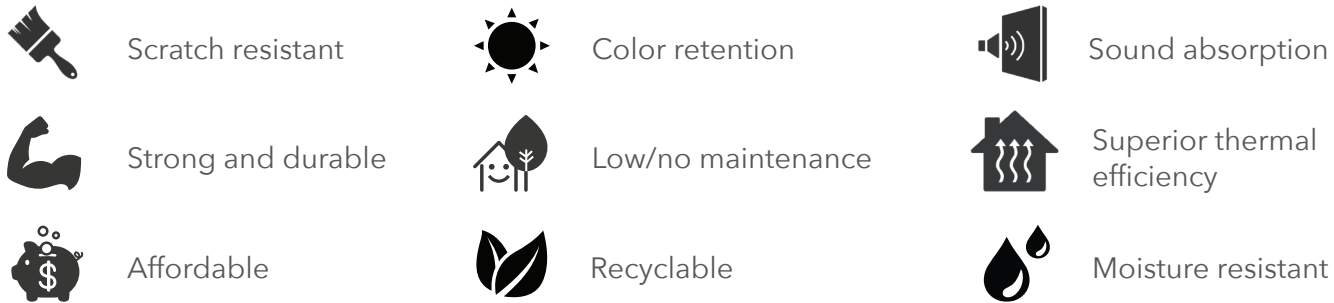


2600SL Studio in Beige with Insul-Deck™

## Why Vinyl

The Oasis® Collection is made with a proprietary vinyl formulation to ensure the optimum in product quality, performance, and durability. This formulation includes a special UV inhibitor that helps provide superior weather-resistance to keep your room beautiful year after year.

Vinyl is virtually maintenance-free to provide you with years of ease. The 2000 and 2600 series easily clean with mild detergent and water. Vinyl's thermal and sound insulating properties enhance the energy efficiency of your home while taming outside noises.



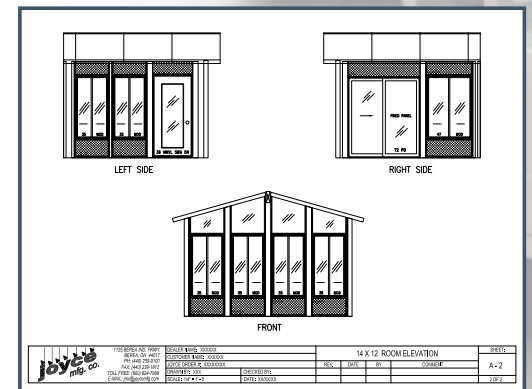
## Testing and Approval

All of our products have been third party tested, exceeding industry standards.



## Professional Services

Every room or roof is designed with the same amount of prestigious care as the last. Using our architectural drawing software with your selections, every room is made to custom fit your home. We have professional engineers on staff to make your dream project a reality.





2600CA Under Existing Roof in White



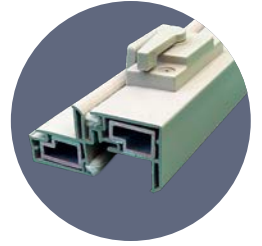
## Standard Sunroom Features

For over 67 years we have been Building Our Reputation, One Room at a Time® through quality craftsmanship, service, and innovation. Every room is custom built to your specifications. Create your perfect room today!



### DUAL OPERATING SLIDERS<sup>1</sup>

- Both sashes slide and lift out for easy cleaning.
- Aluminum reinforced interlocks for added security.
- Fusion welded.
- Full extruded screen with Water Shed Technology.®



### FINISHED INTERIOR

- No exposed fasteners to provide a clean and modern look.



### VINYL PATIO DOOR

- Fully welded sashes with steel reinforcements.
- Adjustable (no rust) brass rollers for smooth operation.
- Key-locked entry handle.



### KORAD® WALL PANEL

- Scratch and dent resistant.
- Vinyl skin includes 100% UV inhibitor.
- TCA-Guard®
- Insulation matches R-Values found in new residential construction.<sup>2</sup>



### CUSTOM FACTORY ASSEMBLY

Wall sections are pre-built by our expert factory technicians – saving time and labor during construction – ensuring a quick and smooth project.\*

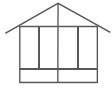
\* (Pre-assembled walls have limitations based on height or weight due to quality control, safety, or truck loading constraints.)

<sup>1</sup> Standard features for the 2000SL and 2600SL Series. 2600CA comes standard with dual operating casement windows.

<sup>2</sup> R-13 fiberglass is used on 2x4 wall construction matching the R-Value on the 2600PD, 2600SL, and 2600CA series. 2000SL Korad® performs at R-10.



2600SL Under Existing Roof in White



## Optional *Sunroom* Features



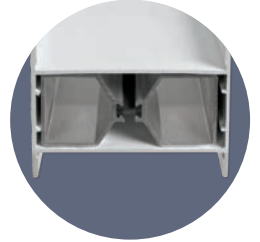
### GLASS TRANSMOM OR TRAPEZOID

- Upgrade your view on any wall with fully welded windows above your doors, or above and below your windows.<sup>3</sup>



### THERMAL BREAK

- Exceptional weather resistance.<sup>3,4</sup>



### ELECTRICAL PACKAGE

- Concealed dedicated channels for electrical or cable runs.
- Flush mounted electric channels, compared to surface mounted.



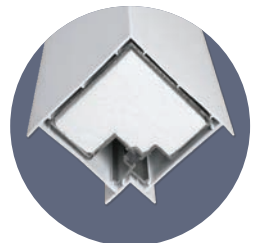
### VINYL ENTRY DOOR

- Keyed deadbolt for security.
- Aluminum reinforcement in vinyl frame and sash chambers.
- Choice of knob or lever handle in brass, satin-nickel, oil-rubbed bronze, or black.



### FOAM-FILLED COMPONENTS

- Provides superior insulation (thermal break package required).<sup>4</sup>



### FLEXSCREEN®

- Seen on Shark Tank, these tensile steel frames bend/bow and increase your view.

### INSUL-DECK™

- Structurally insulated.
- Meets ENERGY STAR® requirements.
- TCA-Guard®

<sup>3</sup>Rooms requiring high wind design can be foam-filled but not thermally broken on H-mullion component.

<sup>4</sup>See pages 22-23 for options available by series.





2600SL Studio in Beige



## Climatemaster® Roof

Utilizing exclusive technology, we've set the industry standard for design, energy efficiency, and strength with our Climatemaster Roof. This design outperforms traditional I-beam or snap & lock systems. It will hold the heaviest of snow loads for a lifetime of worry-free enjoyment, guaranteed!

### CLIMATEMASTER® ROOF

- Gasket compression eliminates exposing sealants to UV.
- Rafter design equalizes weight for entire length of roof (not just at the walls).



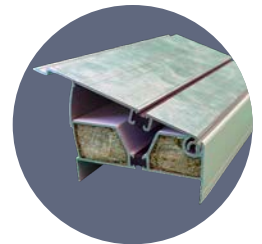
### EXTRUDED GUTTER

- 10x's stronger than conventional roll-form gutter.
- Able to hold the heaviest of rain or snow.
- Matches your home's current style.



### ROOF HEADER

- Distributes roof load evenly across entire length of wall.
- Windows and doors will operate smoothly, in any season, for a lifetime.



### TCA-GUARD® PROTECTION

- Termites and carpenter ants can not penetrate.
- Non-toxic mineral is applied to all of our EPS foam products.







## Optional *Roof* Features



### 3", 3¼" OR 6" ROOF PANELS

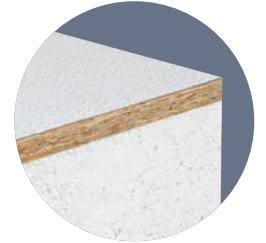
- Different thicknesses to meet load requirements.
- Upgrade to a thicker roof for more insulation.

### SKYLIGHT

- Fixed or operable (screen included).
- 20-1/2" x 43-1/2" overall size.
- Insulated LoE glass.

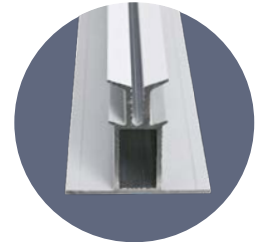
### OSB LAMINATED PANEL

- ½" OSB is applied inside the roof panel for increased strength.
- Allows for application of exterior shingles or wood ceilings.



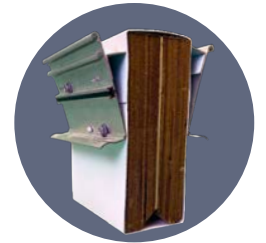
### ROOF MULLION ELECTRIC RACEWAY

- Concealed electric channel for running power or cable.
- Great for overhead fixtures such as ceiling fans or lighting.



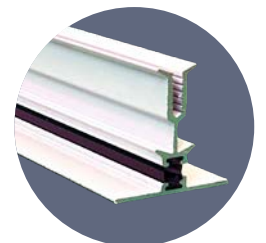
### CATHEDRAL RIDGE BEAM

- Laminated Veneer Lumber (LVL) engineered to your roof load requirements.
- Custom V-notch for running power and lighting.
- Finished with seamless vinyl sleeve.



### THERMAL BREAK

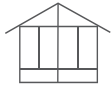
- Increased energy efficiency.<sup>1</sup>



<sup>1</sup>Roof mullion electric raceway not available with thermal break.



2600SL Gable in White



# Smartshield Glass

One of the most overlooked features in a sunroom is glass - a critical oversight considering it can make up 95% of your sunroom walls. We realize how important it is, which is why Smartshield Glass utilizes the highest performing LoE coatings with warm-edge spacer technology. There is no smarter choice which is why we shield it with a lifetime warranty on glass breakage and seal failure.

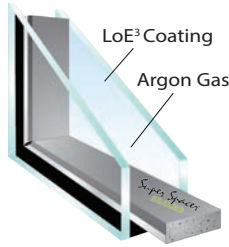


## SMARTSHIELD

**77%** More Efficient in Winter

**83%** More Efficient in Summer

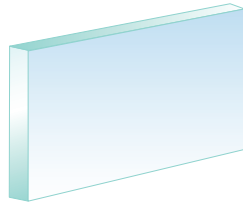
**95%** UV Rays Blocked



\*When compared to single pane clear.

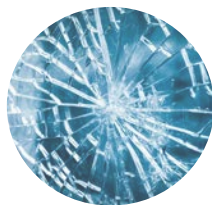
## SINGLE PANE CLEAR

- Best for seasonal use.
- Allows natural light.
- Protection from the elements.



## TEMPERED GLASS

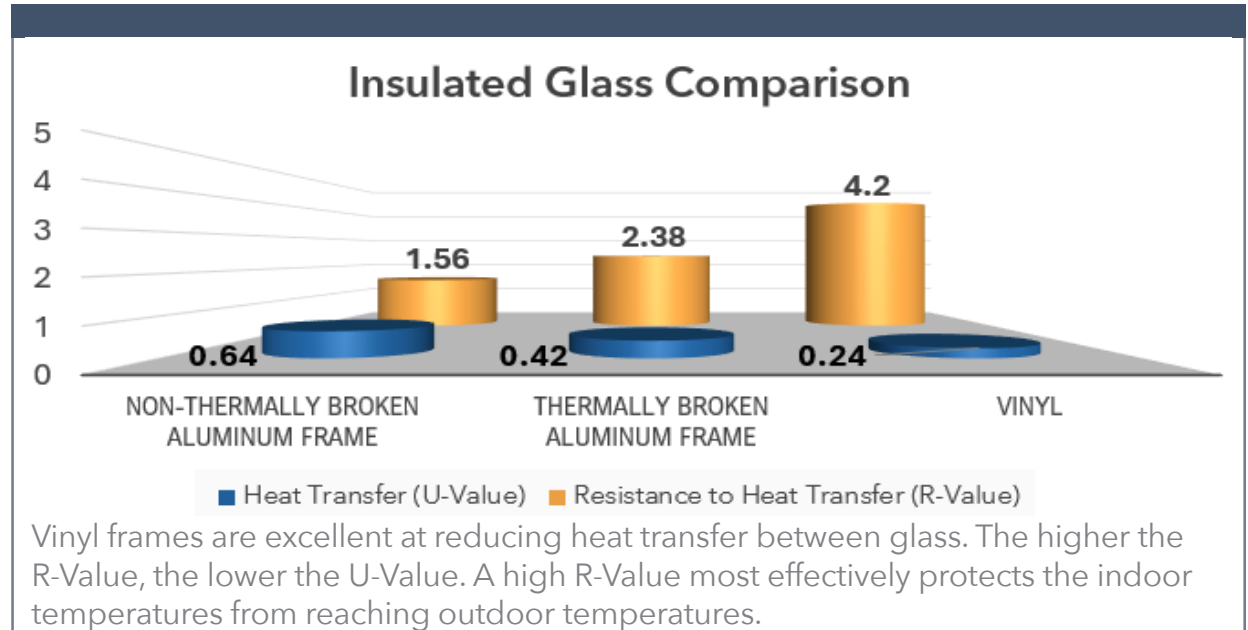
- Standard on all sunrooms.
- 4x's stronger than regular annealed glass.
- Safer and more secure.



## Cleaner. Greener. Neat+

Neat+ is a durable, permanent coating comprised of titanium dioxide. It uses next generation technology to break down greenhouse gases. That means less pollutants and dust can reach your window, resulting in a window that stays naturally cleaner longer without the workload!<sup>1</sup>

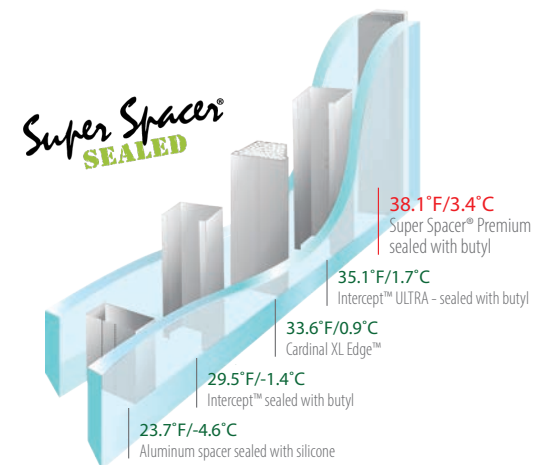
<sup>1</sup>Neat+ is currently a standard feature for all insulated glass (IG) products except for vinyl swing doors and some uniquely sized operable windows. We will extend Neat+ as a standard feature across all IG products by the end of 2024.



## Super Spacer®

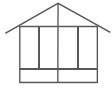
Best in its class, our multilayer memory foam spacer outperforms other spacer systems on the market due to its all-around performance and benefits:

- Better thermal performance
- Non-dissipating argon gas
- Sound absorption
- Unparalleled seal retention
- Mold prevention
- Longest lasting insulated glass





2600SL Architectural in Beige



## Outdoor *Living* with a Screen Room



### **MAINTENANCE FREE COMPONENTS**

---

- Krystal Kote® paint process.
- Electrostatic applied polyester paint.
- Finish that will not fade and resists scratches.
- Superior over wet-applied or baked enamel.
- Extruded frame has greater strength over roll-formed.

### **DESIGN OPTIONS**

---

- Available in Korad solid panels or full-view screens.
- Up to two out-swing storm doors come standard.
- Customize your chair rail height.

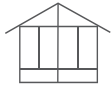


### **BETTERVUE INSECT SCREENING**

---

- Water Shed Technology™
- Repels water, prevents dirt and debris from staying on screen.
- Greater openness for better airflow and more natural light.
- Durable hydrophobic coating will not discolor.





## Stay Cool, Dry, and *Comfortable* with a Patio Cover



### ROOF SYSTEM

---

- Climatemaster 4' wide panels.
- Krystal Kote® finish prevents scratches, discoloration, or chalking.
- Minimal pitch requirements.

### DESIGN OPTIONS

---

- 3" x 3" post support system, or custom wood engineered design.
- Add skylights or OSB laminated roof panels.
- Easy to add walls and convert your patio cover to a sunroom or screen room later.

### SUPPORT SYSTEM

---

- 3" x 3" extruded posts (stronger than 4" x 4" pine with no twisting).
- Concealed fasteners with vinyl inside roof trim.





# Relax with a Studio Sunroom





# Entertain With a Gable Sunroom





# Revitalize Your Existing Space





# Outdoor Living *Inspiration*





# Oasis® Collection At-A-Glance



	Seasonality	White, Beige, Clay	Gable	Studio	Architectural	Under Existing	Single Pane Clear	Smartshield Glass	Sto
	Preferred Usage <sup>3</sup>	Color	Roof Styles				Glass Options		Do
<b>2600SL Series</b> Fully customizable to your liking.									
<b>2600CA Series</b> Selective style with unmatched performance.									
<b>2600PD Series</b> Full views with ventilation.									
<b>2000SL Series</b> The economical choice.									
<b>Screen Room</b> Outdoor living.									
<b>Patio Cover</b> Blocks the elements.									

<sup>1</sup>Roof panels, ridge beam sleeve, and 3" x 3" patio cover posts are only available in white. Roof trim can be color matched to beige or clay walls. Beige and clay roof trim only available in 3¾" and 6" roof panels.

<sup>2</sup>FlexScreen® is only available on sliding windows.

<sup>3</sup>Depending on climate, a heat source may be required to use in winter months similar to usage of a home furnace.

Door Options		Window Styles & Options					Optional Features			
✓	✓	✓		✓	✓	✓ <sup>2</sup>	✓	✓ <sup>4</sup>	✓	✓
✓	✓		✓	✓	✓		✓	✓ <sup>4</sup>	✓	✓
	✓				✓		✓	✓ <sup>4</sup>	✓	✓
✓		✓				✓ <sup>2</sup>			✓ <sup>6</sup>	✓
✓										
							✓		✓	

<sup>4</sup>Foam-filled extrusions are only available on wall components, and when thermal break is selected.

<sup>5</sup>Height limited to 10' wall. Consult dealer or Joyce Mfg. Co engineering if under-existing application requires load bearing support to existing roof.

<sup>6</sup>Electrical raceway comes standard in 2000SL Series requiring just electrical post to complete electrical raceway system.



## Warranties We Stand Behind\*

### LIFETIME & TRANSFERABLE

- 2000SL, 2600SL, 2600CA, 2600PD
- Climatedmaster® Roof and Insul-Deck.™
- Glass breakage and seal failure.

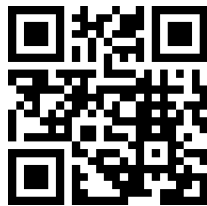
### 15 YEAR TRANSFERABLE

- Screen room walls.



Windows • Patio Doors • Sunrooms

\*See actual warranties for full details.



Scan to Learn More About  
the Oasis® Collection



Scan to Register Your  
Sunroom Warranty

1125 BERA INDUSTRIAL PARKWAY • BERA, OH 44017 • (800) 824-7988 • WWW.JOYCEMFG.COM

©2024 Joyce Manufacturing Co., Inc. All rights reserved. We may amend, update, or otherwise make changes without notice. All photos and illustrations are property of Joyce Manufacturing Company, Inc., and approved vendors.

Oasis®, Climatedmaster®, TCA-Guard®, Building Our Reputation One Room at a Time®, and Imagine the Possibilities® are all registered trademarks of Joyce Manufacturing Company, Inc. Insul-Deck™ is a trademark of Joyce Manufacturing Company, Inc. Smartshield Glass is the intellectual property of Joyce Manufacturing Company. Krystal Kote® is a registered trademark of Lilly Industries, Inc. Korad® is a registered trademark of Polymer Extruded Products, Co. Energy Star® is a registered trademark of the U.S. Environmental Protection Agency. Cardinal Glass: Values are calculated BTU Heat Loss and Gained using Cardinal Glass Technical Glass Guide 2.0 (p. 15; 20; 21) according to NFRC environmental conditions. Double-pane IG dimensions: 1/2" airspace, 90% argon filled for LoE3-366\* products. NFRC conditions- 0°F outside, 70°F inside were used for all calculations. Super Spacer® and Duralite® are registered trademarks of Quanex Building Products. SuperSpacer: Simulations performed by WSP Canada Ltd. using Window 7.4 and Therm 7.4, according to NFRC 100-2014 and NFRC 200-2014. All models were 1200 x 1500 mm (approx. 48" x 60") and NFRC-2010 conditions - 0°F outside, 70°F inside - were used for all simulations. Secondary sealant materials and depths are as listed. Temperature values shown are from modeling results, and were measured at the sightline (SL) and at 0.5" above the sightline (SL+ 1/2"). XL Edge IG® and LoE3-366\* are registered trademarks of Cardinal Glass Industries. Intercept® and Intercept Ultra® are a registered trademark of Vitro® Architectural Glass. FlexScreen® is a registered trademark of Reflex Brands. Bettervue® is a registered trademark of Phifer. Water Shed Technology™ is a trademark of Phifer.